

UNIHOMES 3

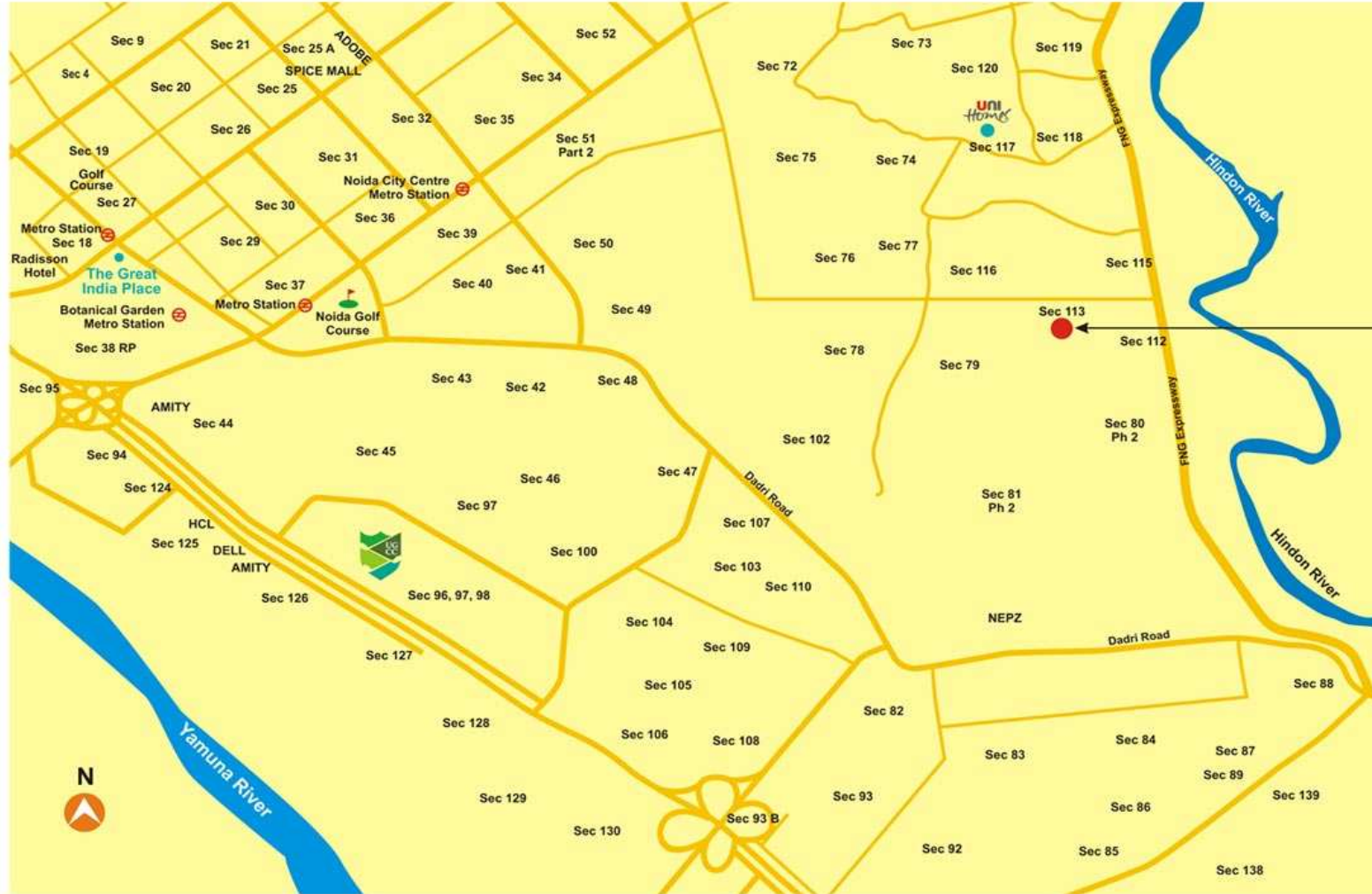
Project Details

- Unit Type : 2 & 3 BR Apartments
- Sizes Available : 899 - 1192 sq.ft.

Location Advantages

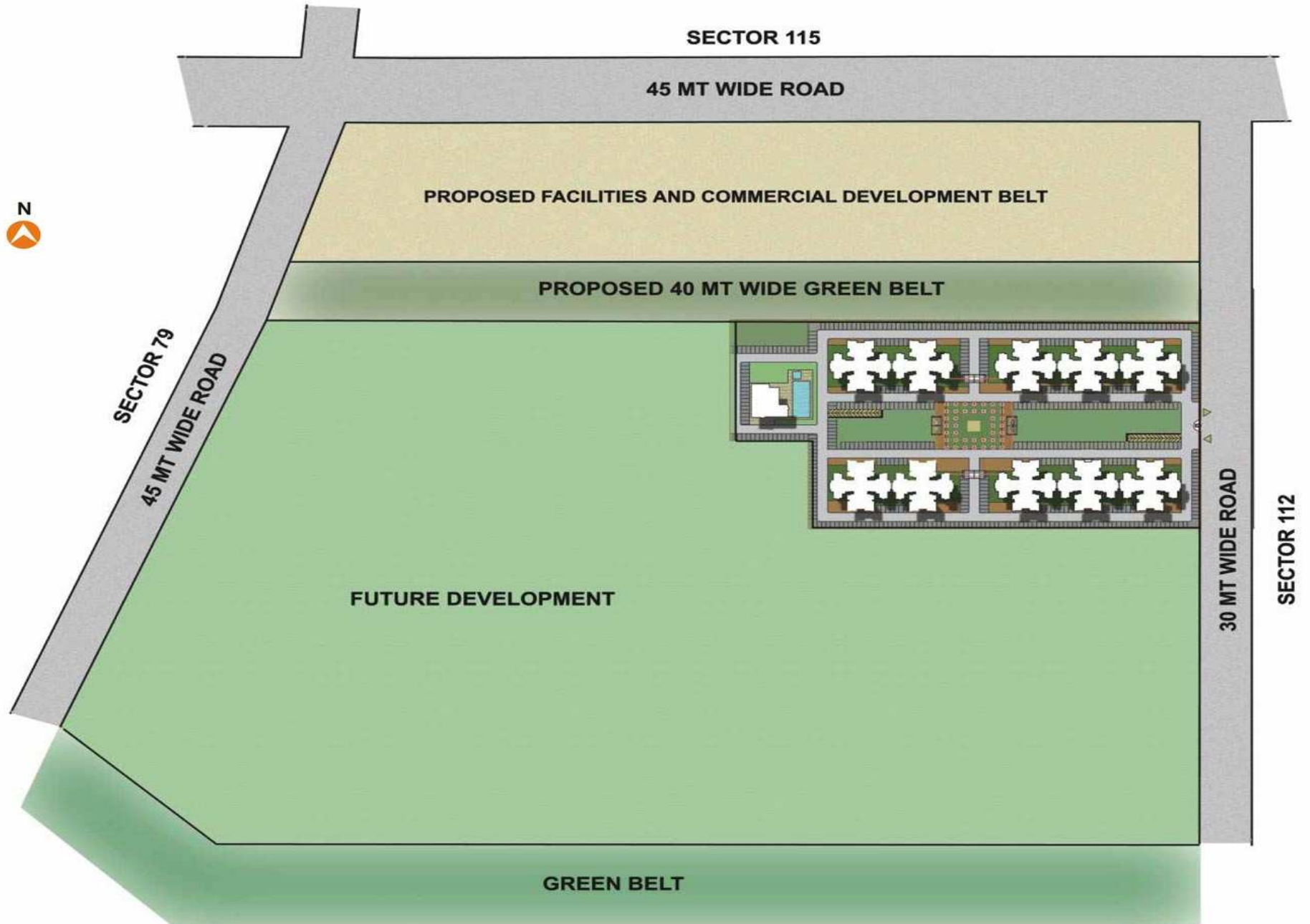
- Located just 200 meters from the FNG (Faridabad - Noida - Ghaziabad) Expressway, Unihomes 3 enjoys excellent connectivity to Ghaziabad and Delhi through NH - 24. Also, it is just a 15 minutes drive from the commercial and retail developments of Sector -18 and a 10 minutes drive from the offices of Sector - 62. The nearest metro station in Sector - 32 is only 7 kms away, giving you an easy access to the entire NCR.
- Besides this, Unihomes 3, is strategically located with a premium wide independent access road and green belt on 2 sides. Also there is a proposed retail and commercial development on 100 mtrs wide belt, next to one of the green belt.

Location Map

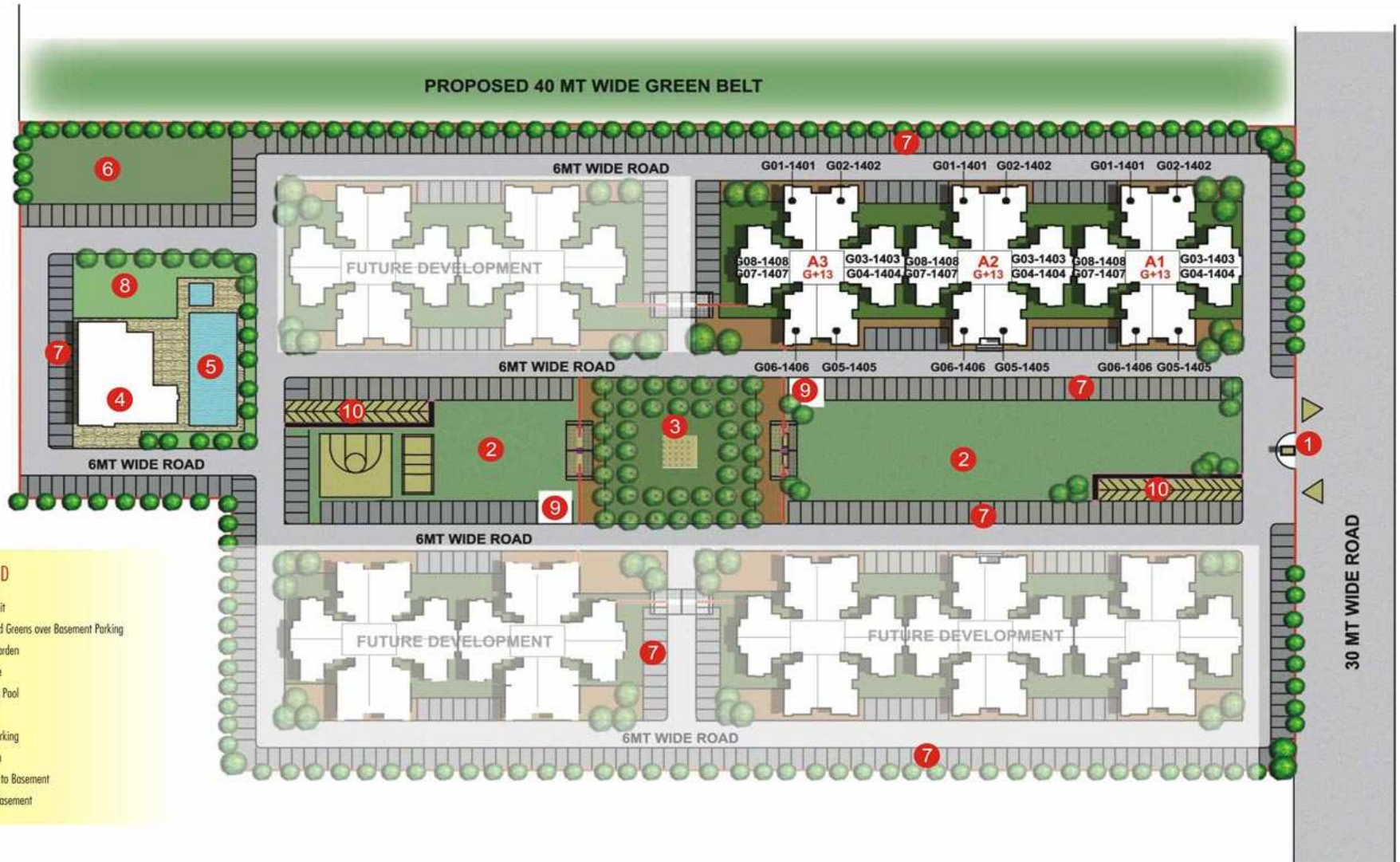


uni
Homes 3

Master Plan

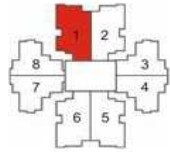


Key Plan



Type - X1

1BR1T+STUDY - 805 sq. ft.

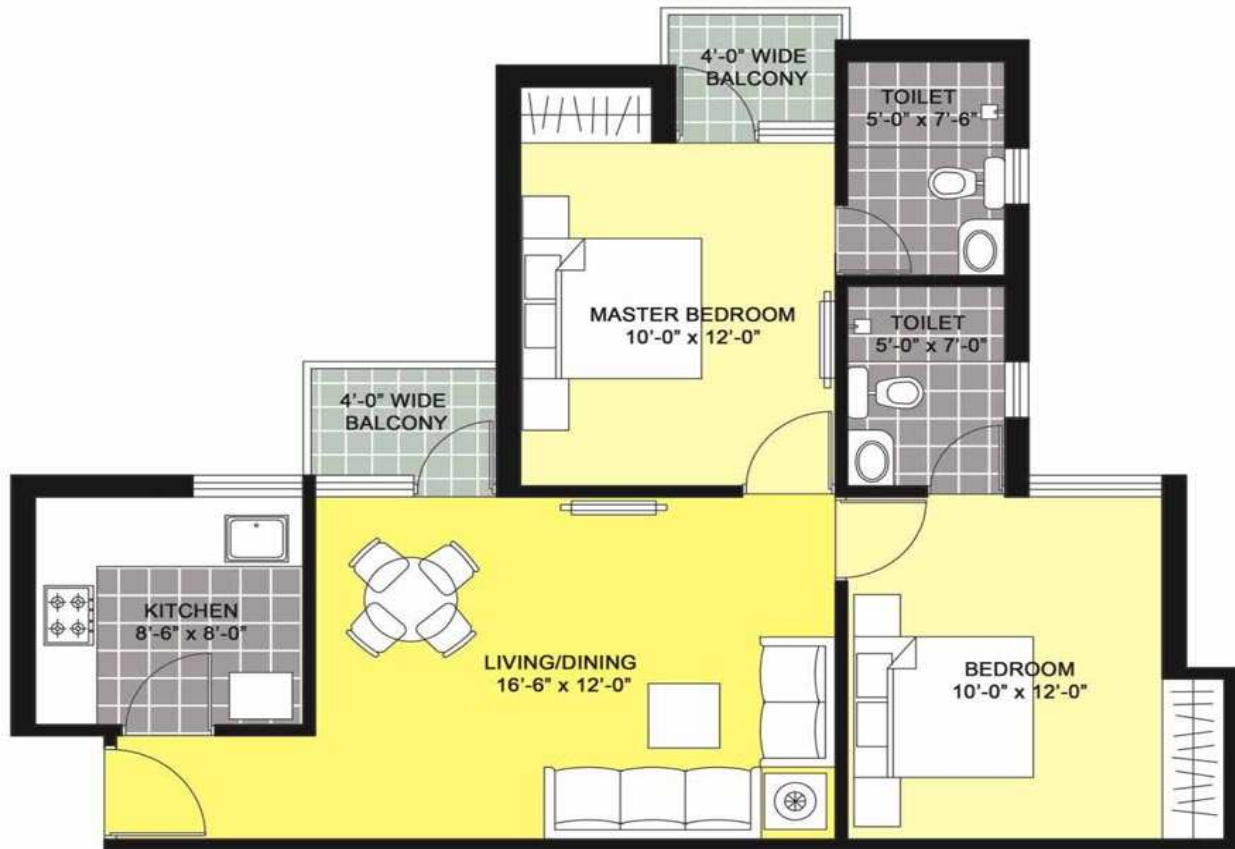
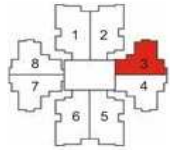


A1, A2, A3 :
G01, G02*

Note: * mark indicates mirror unit.

Type Y1

2BR2T - 899 sq. ft.

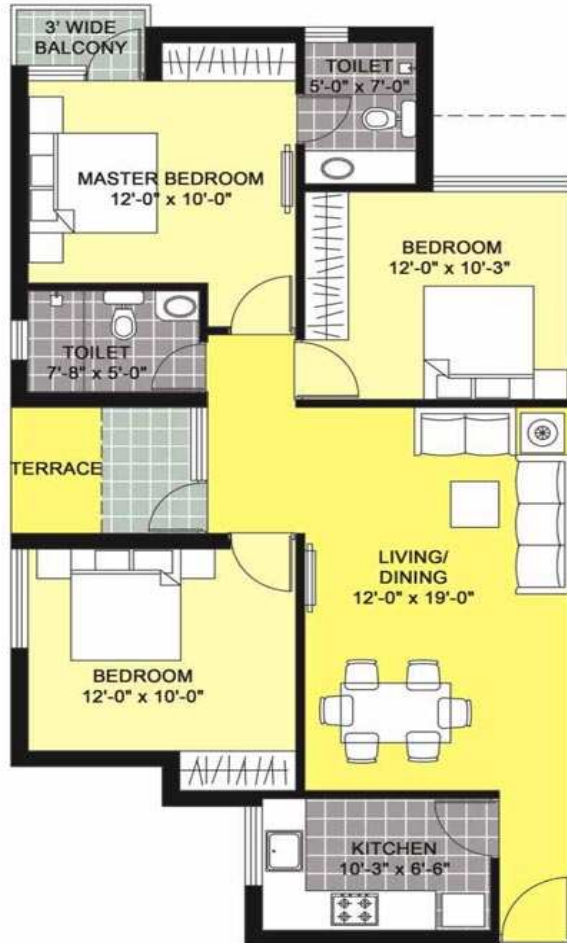
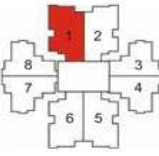


A1, A2, A3 :
G07* - 1407*
G08* - 1408*
G03 - 1403
G04* - 1404*

Note: * mark indicates mirror unit.

Type - Z1

3BR2T - 1168 sq. ft.
Terrace Area - 25 sq. ft.

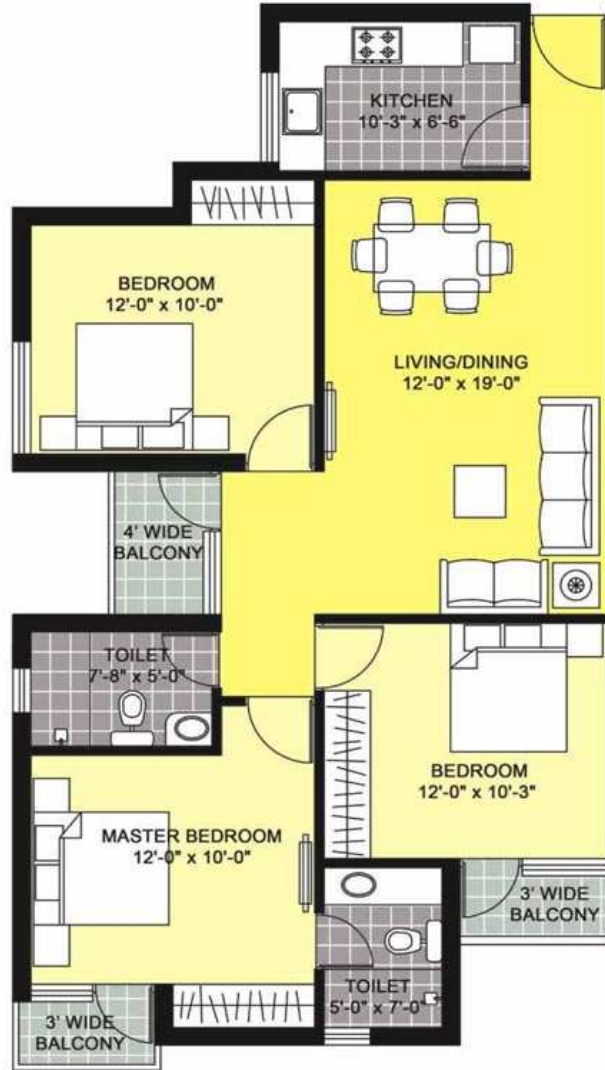
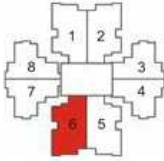


A1, A2, A3 :
101
102*

Note: * mark indicates mirror unit.

Type - Z2

3BR2T - 1192 sq. ft.



- A1, A2, A3:
- 201* - 1401*
- 202* - 1402*
- G05* - 1405*
- G06 - 1406

Note: * mark indicates mirror unit.

Specifications

Structure

Earthquake resistant RCC framed structure

Flooring

Living / Dining Room	:	Vitrified tiles
Bedroom	:	Vitrified tiles
Kitchen	:	Ceramic tiles
Toilet	:	Ceramic tiles
Balconies	:	Ceramic tiles
Lift Lobby	:	Combination of paint and stone / tiles

Paint

Internal Wall	:	Plastered & painted by OBD
External Wall	:	Exterior paint
Doors	:	Synthetic enamel paint

Doors

Painted door shutter with hardwood frame

Windows/ External Doors

Powder coated aluminium glazing

Kitchen

Dado	:	Ceramic tiles upto 2' height from counter top in counter area, rest painted with OBD
Fittings	:	Granite counter with stainless steel sink

Toilets

Dado : Ceramic tiles upto 7' height
Fittings : White sanitary fixtures, CP fittings

Electrical

Copper wiring in concealed conduits, modular switches.

Power back-up

24 X 7 Power back-up for essential services and common areas, limited power back-up with each apartment

Lift

Three passenger elevators in each tower

Communication

One TV / Telephone point in living room and master bedroom

Note: The layout, building plans, and specifications of buildings, complex and the apartments are tentative and subject to variation /deletion as deemed appropriate by the Company or as directed by any competent authority. Furniture is not being provided. Furniture layout shown in the Brochure is only indicative of how the Unit can be used. Dimensions given in the unit plans are masonry dimensions (excluding the plaster thickness). All dimensions are rounded off and marginal variations may occur in the process of construction as per Architect's advice.